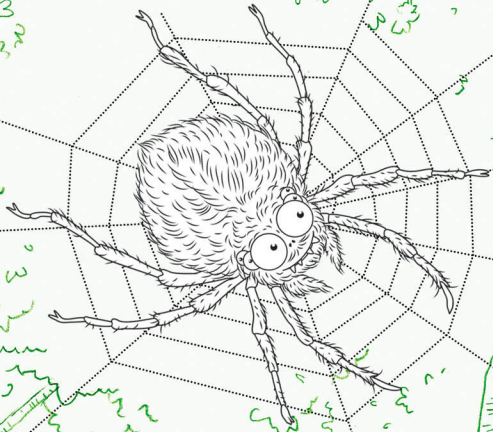
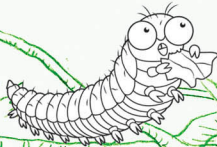


Can you find these insects in your garden?

SPIDERS (pūngāwerewere) are not insects because their bodies have two parts instead of three, and they have four pairs of legs instead of three. Many spiders build webs out of silk thread to catch insects. They spin the thread with a special organ called a spinneret. Most spiders have many more than two eyes.



GRUBS (whē) are also known as larvae. They hatch out of an insect egg and then eat lots and lots of food, such as leaves, plant roots, seeds, bark or dead wood, depending on the insect they will become.



MOSQUITOES (ngaeroa) are slender, long-legged flies whose larvae live in water. Sometimes you can hear the whine of the females as they fly around at night trying to suck the blood of people and animals. A mosquito bite is itchy, and can spread disease.



BEETLES (tātaka) are so numerous that one in three insects in the world are actually beetles. A beetle always has a pair of front wings that have changed into a hard, shiny shell that covers and protects the body, and another pair of wings that fold underneath. They eat all sorts of plants and the bark of trees, as well as other insects.



Then you could colour them in.